



亞洲水泥

ASIA CEMENT CORPORATION



Asia Cement Corporation Biodiversity Policy

In order to effectively restore land use after limestone extraction and anticipate a net positive impact on biodiversity, Asia Cement has formulated this policy.

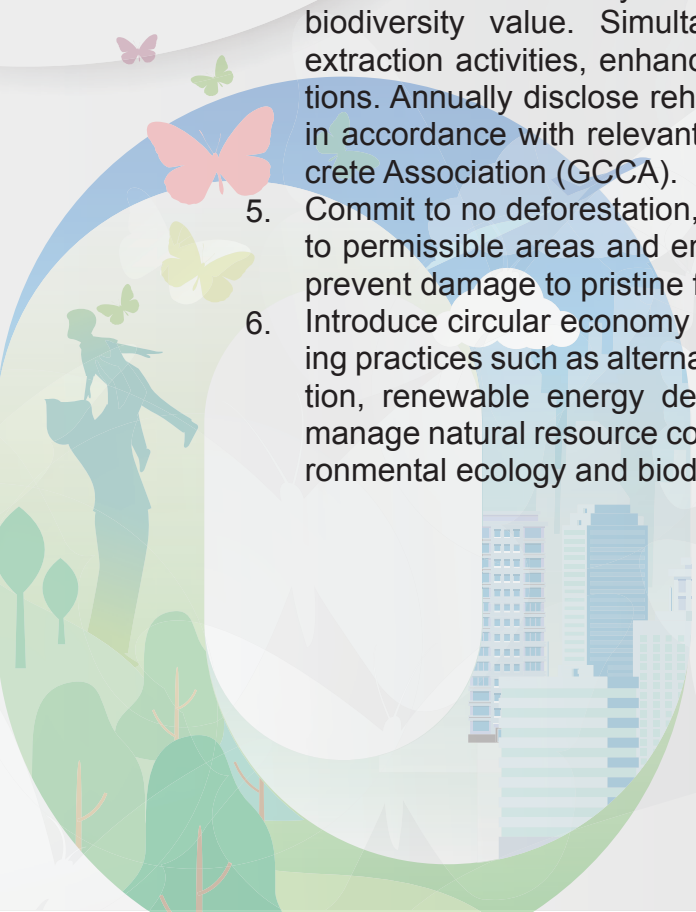
I. Scope

This policy applies to all limestone extraction sites owned or under the management control of Asia Cement Corporation.

II. Commitments and Guidelines

The Company commits to implementing biodiversity mitigation practices such as "avoid," "reduce," "restore," and "off-site compensation" within the corporate effort scope. Collaboration with value chain partners is integral to achieving the following commitments and guidelines:

1. Conduct environmental and social impact assessments, including community and biodiversity impact, prior to settling in new areas.
2. Develop environmental maintenance plans and closure plans for all limestone extraction sites. Implement land reclamation, rehabilitation, and disaster prevention measures on mined land after its use, in accordance with the relevant regulations.
3. Undertake biodiversity risk assessments following the Taskforce on Nature-related Financial Disclosures (TNFD) guidelines.
4. Establish a Biodiversity Management Plan (BMP) for extraction sites with high biodiversity value. Simultaneously conduct ecological restoration during extraction activities, enhancing biodiversity value through nature-based solutions. Annually disclose rehabilitation areas and other biodiversity information in accordance with relevant guidelines provided by Global Cement and Concrete Association (GCCA).
5. Commit to no deforestation, strictly adhere to local regulations, limit extraction to permissible areas and ensure 100% no logging outside regulated areas to prevent damage to pristine forests.
6. Introduce circular economy principles in the cement production process, utilizing practices such as alternative fuels and materials, waste heat power generation, renewable energy development and carbon capture technologies to manage natural resource consumption and minimize negative impacts on environmental ecology and biodiversity.





III. Biodiversity Mitigation

Avoid:

Avoid extraction or exploration in World Heritage areas, International Union for Conservation of Nature (IUCN) I-IV category protected areas and Key Biodiversity Areas (KBA).

Reduce:

Adopt bench mining and nature-mimicking afforestation methods to minimize environmental impact, control blast vibrations during extraction to reduce biodiversity impacts.

Restore:

Implement ecological restoration at all extraction sites, complete 100% afforestation to rebuild habitats, protect wetlands and plant native vegetation to restore mined areas.

Off-site compensation

Undertake off-site compensation through ecological restoration actions, establish the Asia Cement Ecological Park, gather biodiversity survey monitoring data, assist domestic institutions and schools in creating green communities or butterfly gardens, promote ecological environmental education and foster a green sustainable homeland.



IV. Natural Resource Governance Framework



Establish a natural resource governance framework following the TNFD, with the Board of Directors forming the Corporate Sustainability Committee to oversee biodiversity development. Under the President, the Company establishes the Corporate Sustainability Implementation Committee to assess biodiversity risks and opportunities, plan and execute biodiversity-related initiatives, and regularly report to the Corporate Sustainability Committee.